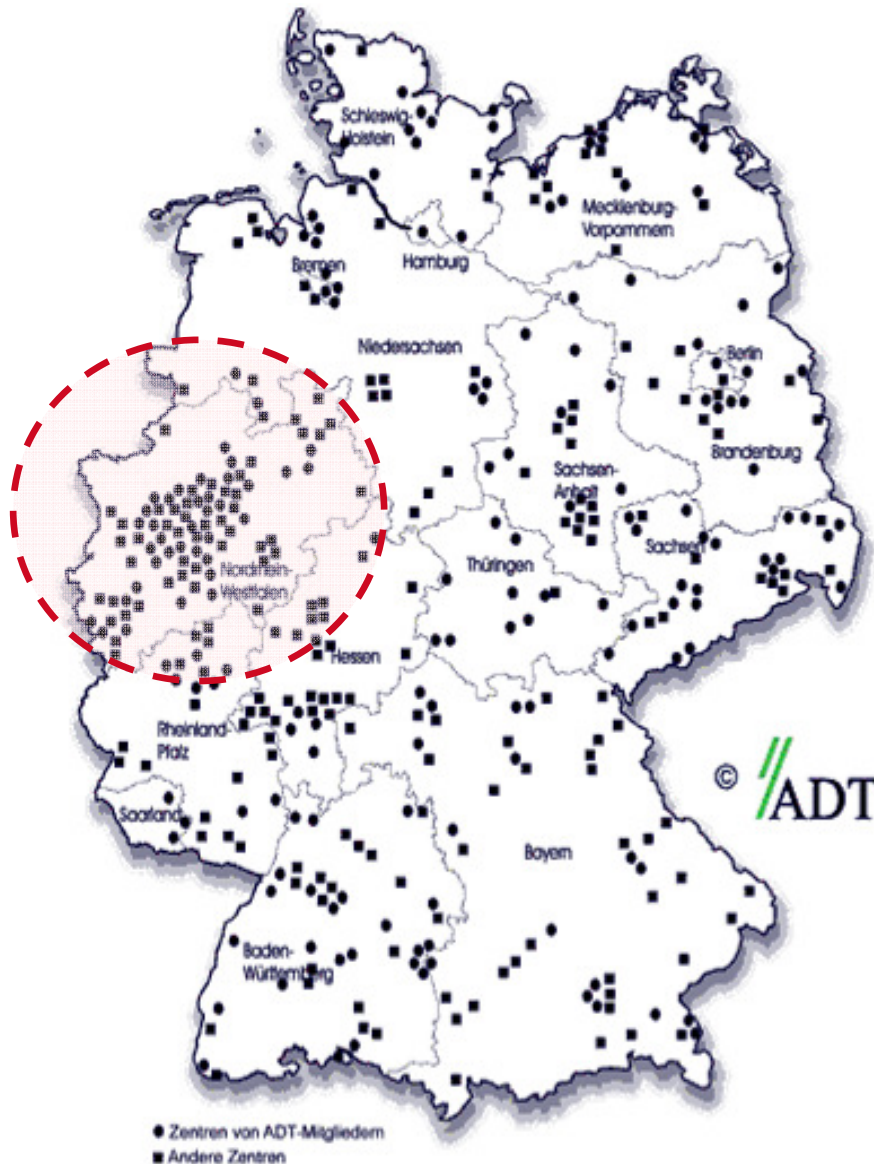




TechnologieZentrumDortmund
Diego Atienza
TechnologieZentrumDortmund GmbH

Sites of Technology Centers and Business Incubators in Germany



Germany

- 397 innovation centers
- 1 center to approx. 200.000 inhabitants respectively 91.000 employees

Northrhine-Westfalia

- 86 innovation centers
- 1 center to approx. 180.000 inhabitants respectively 75.000 employees

TechnologieZentrumDortmund

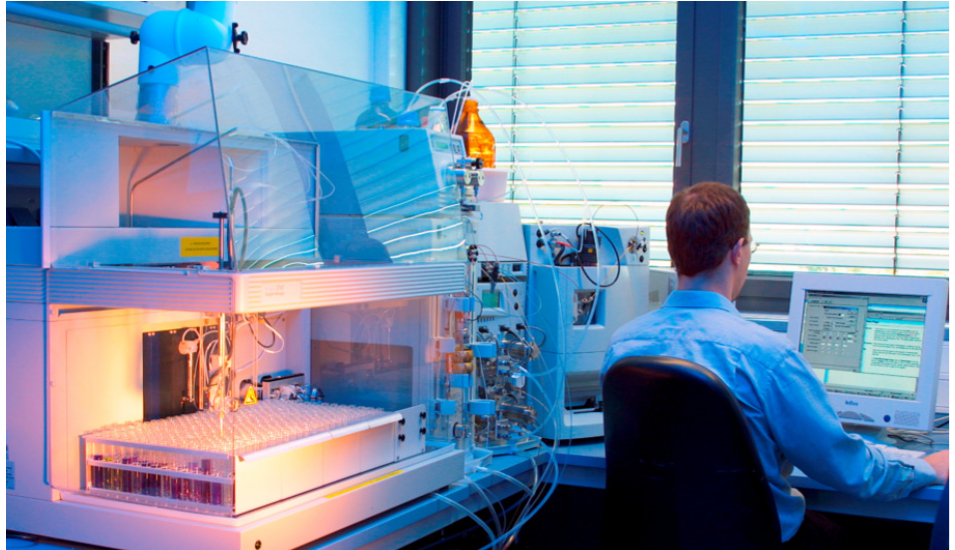
Key Facts & Figures



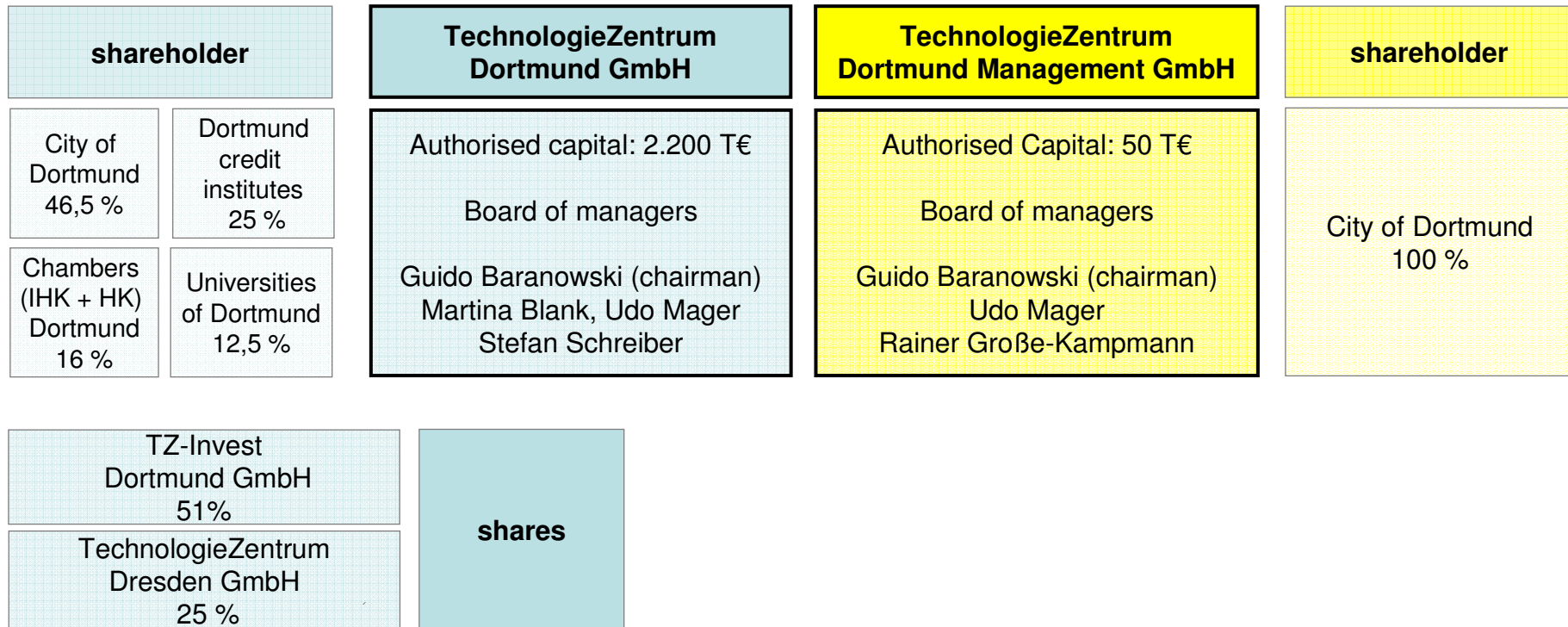
- Foundation of the company: 1984
- Total number of companies supported: approx. 430
- Rate of insolvent companies during 25 years: < 5%
- Actual stock of tenants TZDO + Centers: approx. 180
- Companies in the entire TechnologiePark: approx. 280
- Employees in the TechnologiePark: approx. 8.200
- Plot area TechnologiePark: 40 ha

updated: 06/2008 survey of companies
updated: 07/2009 tenants TZDO

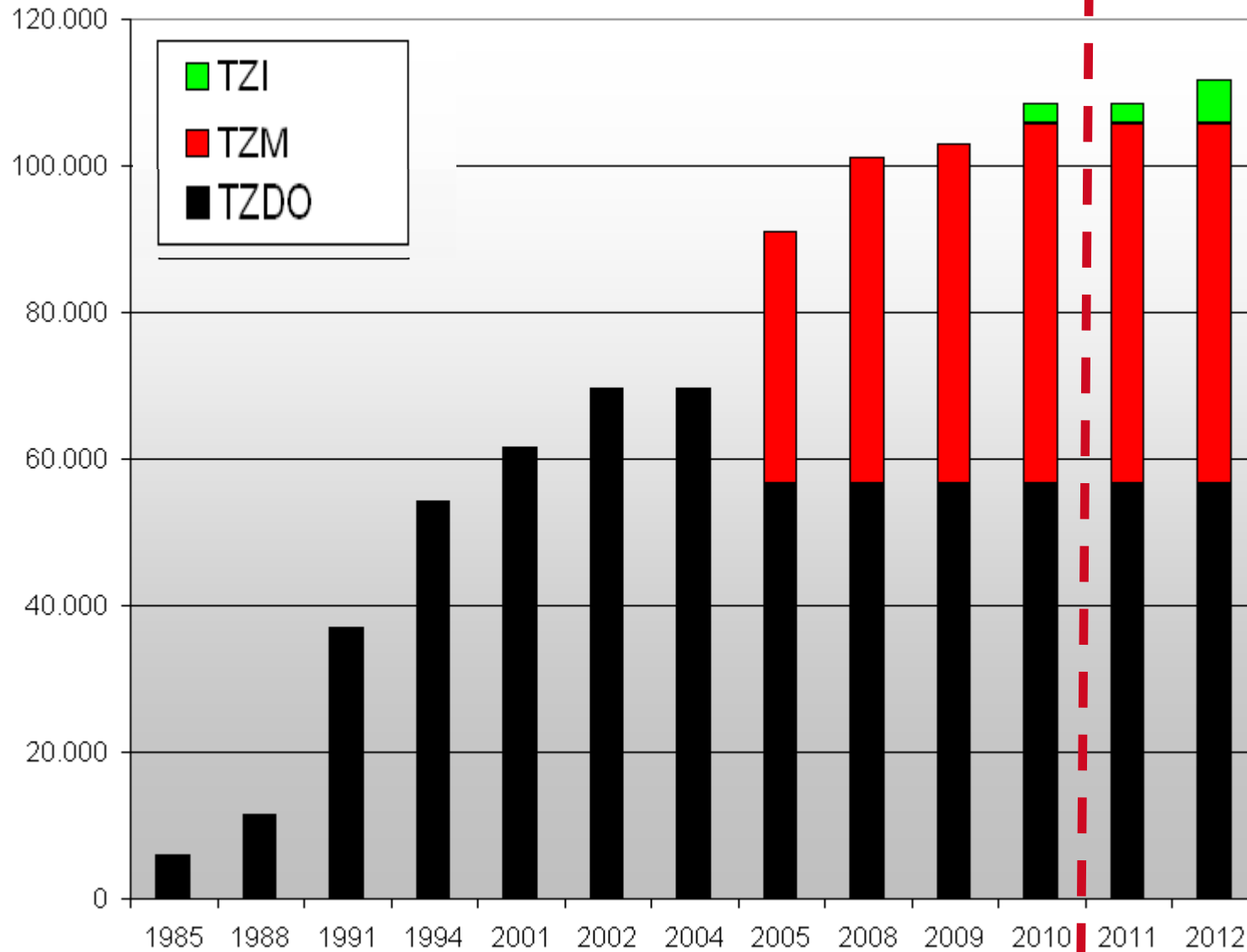
Beispiele Infrastruktur



TechnologieZentrumDortmund management structure



Development incubator space

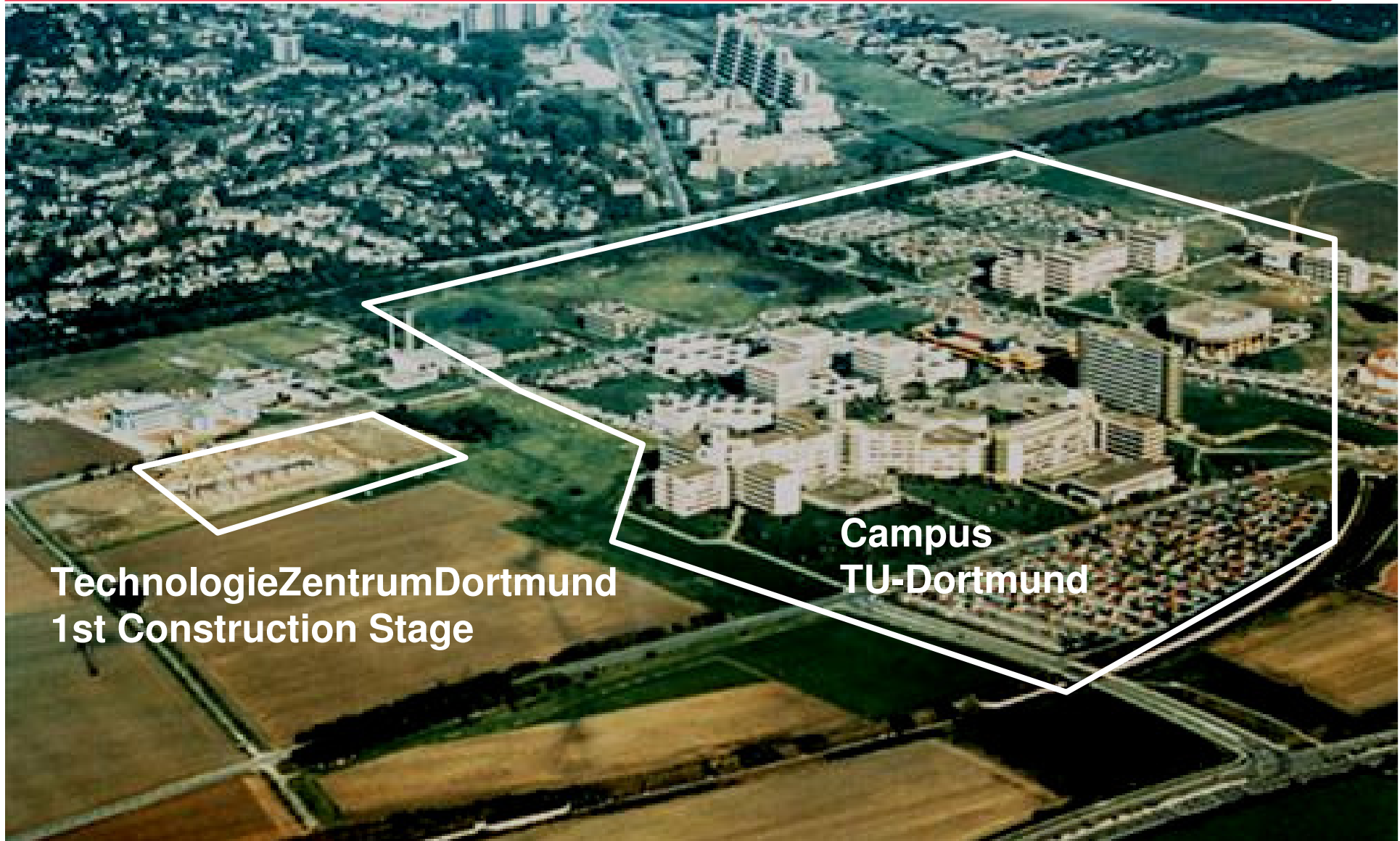


TechnologieZentrumDortmund Sites in Dortmund

Übersicht der Kompetenzzentren des TZDO



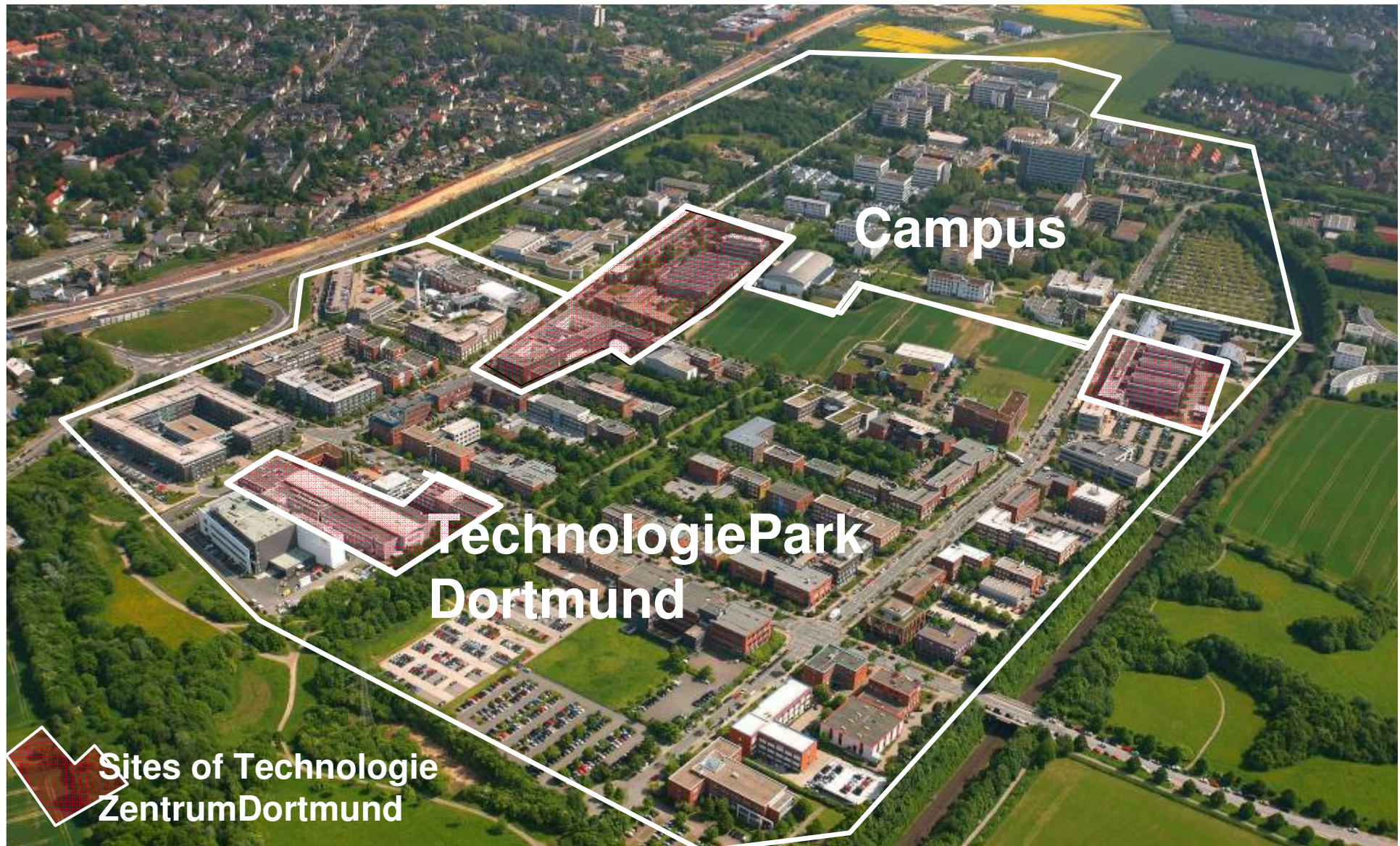
TechnologieParkDortmund – 1984



TechnologieZentrumDortmund
1st Construction Stage

Campus
TU-Dortmund

TechnologieParkDortmund – 2009



BioMedizinZentrumDortmund

Offer of infrastructure



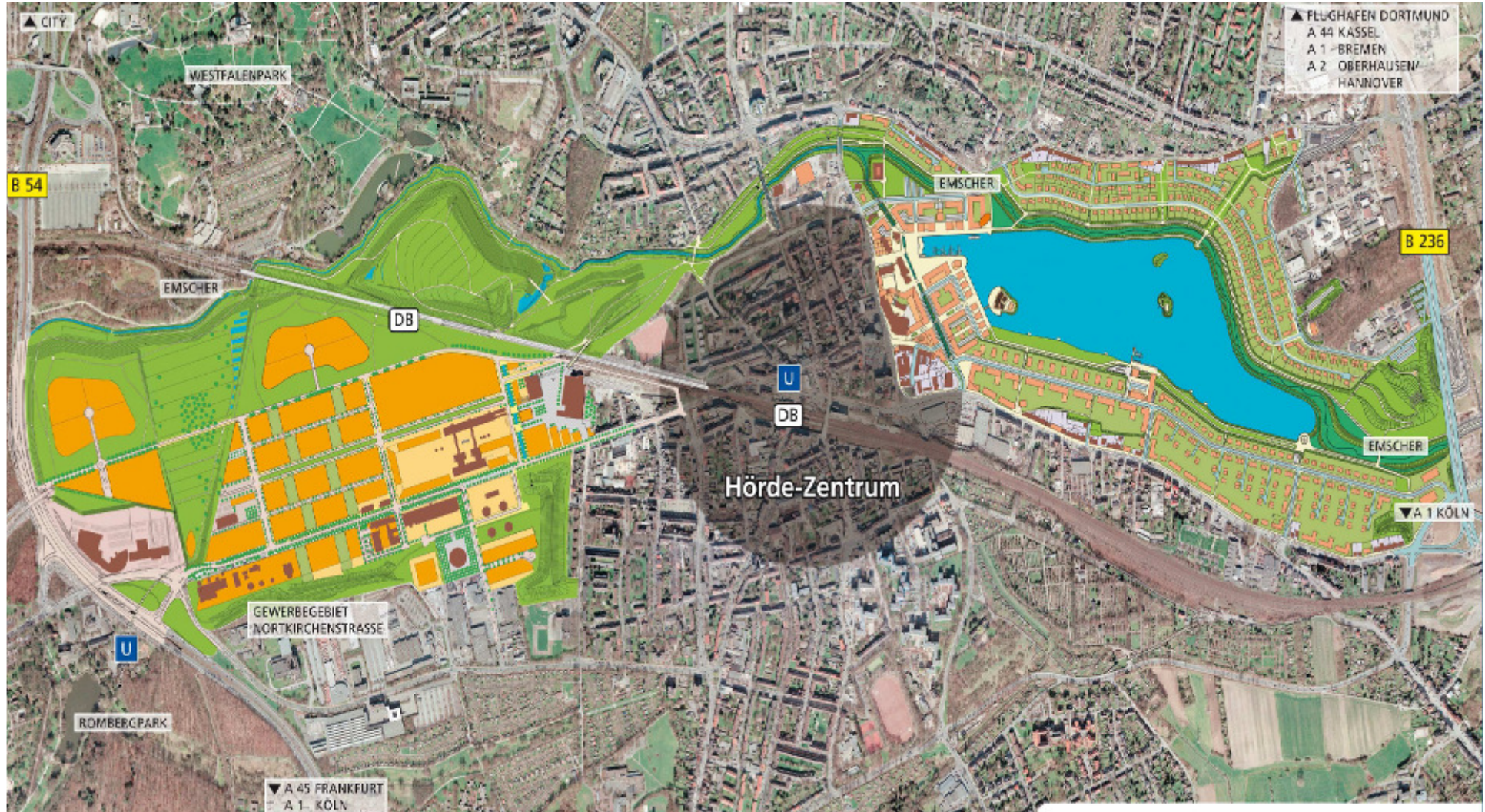
Floorspace building	section I
Total	3.000 sqm
Office	1.000 qm
Laboratory	2.000 qm
Completion	3/2002
Sourcing volume	12,7 Mio. €

Floorspace building	section II
Total	12.000 qm
Office	6.000 qm
Laboratory	6.000 qm
Completion	5/2005 + 06/2009
Sourcing volume	45,2 Mio. €

PHOENIX – 2000



PHOENIX West



PHOENIX-See 2000 / 2012



Potential for development at PHOENIX-West



MST.factory dortmund – Offer of infastructure



Floor space building section I+II

Total	9.400 qm
Office	2.570 qm
Laboratories	2.060 qm
Technics	1.400 qm
Completion	4/2005 und 5/2007
Sourcing volume:	approx. 50 Mio. Euro

Zentrum für Produktionstechnologie

offer of infrastructure for SME



Floor space building section I + II

total	9.000 sqm
office	4.000 sqm
laboratories	4.000 sqm
technics	1.000 sqm
completion	October 2008

Investments building section I u. II

Total	Approx. 25 Mio. Euro
Buildings and technical equipment	Approx. 14 Mio. Euro
Branch specific devices	Approx. 11 Mio. Euro

Sourcing:

- Ministry of economy, SME and energy NRW
- European Union NRW Ziel 2 – Programm (funding)
- Federal funds of the RWP Programm NRW
- City of Dortmund fund assets technologycenter

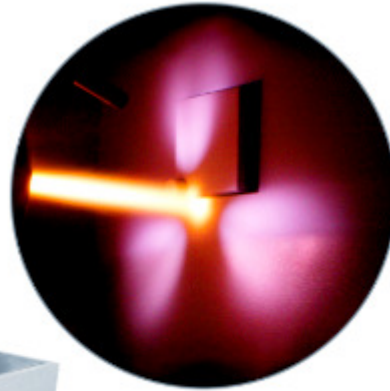
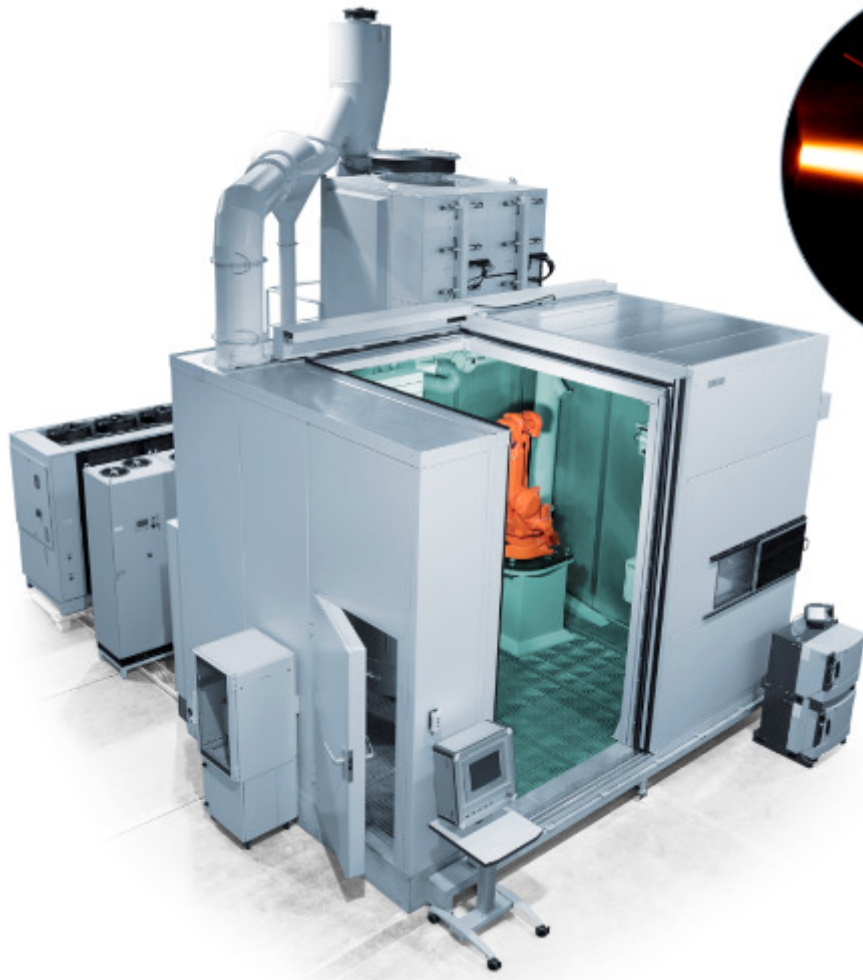
Standort PHOENIX West – Projekt Albonair



15.06.2010



Examples production-technology products



Know-how design/initiation of technologycenters

- 1990 technologycenter Dresden (25% share)
- 1995-2000 technologycenter Wladimir
- 2009 Science Park Kassel
- since 2010 Technologypark Sofia

Contact



TechnologieZentrumDortmund GmbH

Emil-Figge-Str. 76-80

D - 44227 Dortmund

Tel.: +49-(0)231-9742-100

Fax.: +49-(0)231-9742-395

www.tzdo.de